

INSTRUCTIONS: PAGES WITH FINISHED ART SHOULD MEASURE 10" WIDE BY 15" TALL. MAKE A TWO-PAGE SPREAD BY BUTTING PAPER AT EDGES. TAPE ON BACK. DO NOT OVERLAP AT CENTER! EACH HALF SHOULD MEASURE 10 5/8" WIDE, FULL SPREAD IS 21 1/4" WIDE.

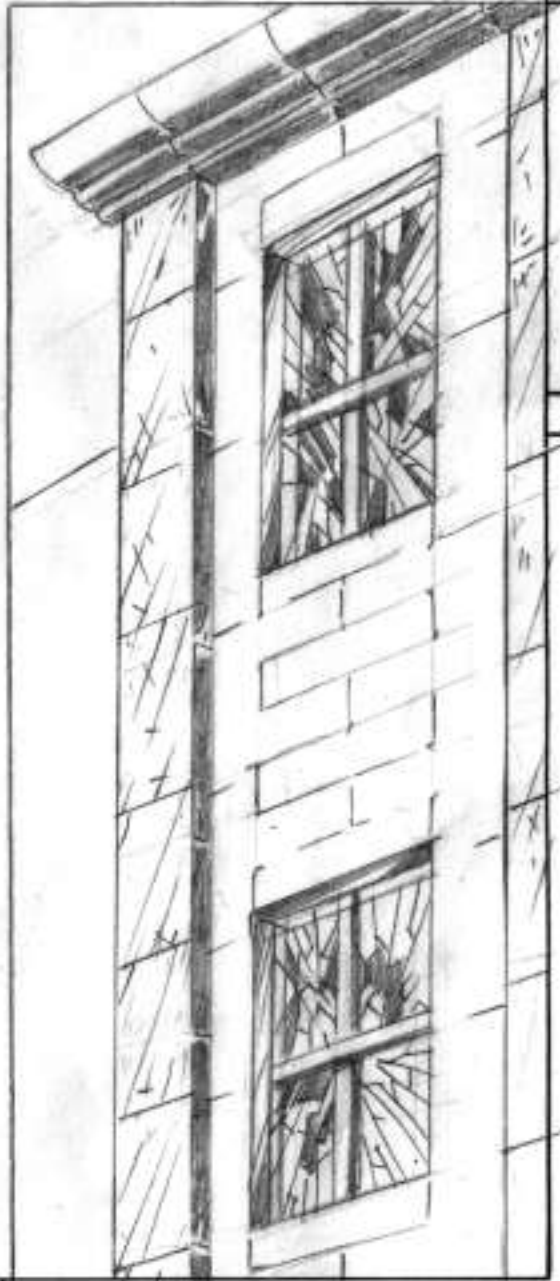
PENCILLER:

INKER:

COLORIST:

LETTERER:

WRITER:



INSTRUCTIONS: PAGES WITH FINISHED ART SHOULD MEASURE 10" WIDE BY 15" TALL. MAKE A TWO-PAGE SPREAD BY BUTTING PAPER AT EDGES. TAPE ON BACK. DO NOT OVERLAP AT CENTER! EACH HALF SHOULD MEASURE 10 5/8" WIDE, FULL SPREAD IS 21 1/4" WIDE.

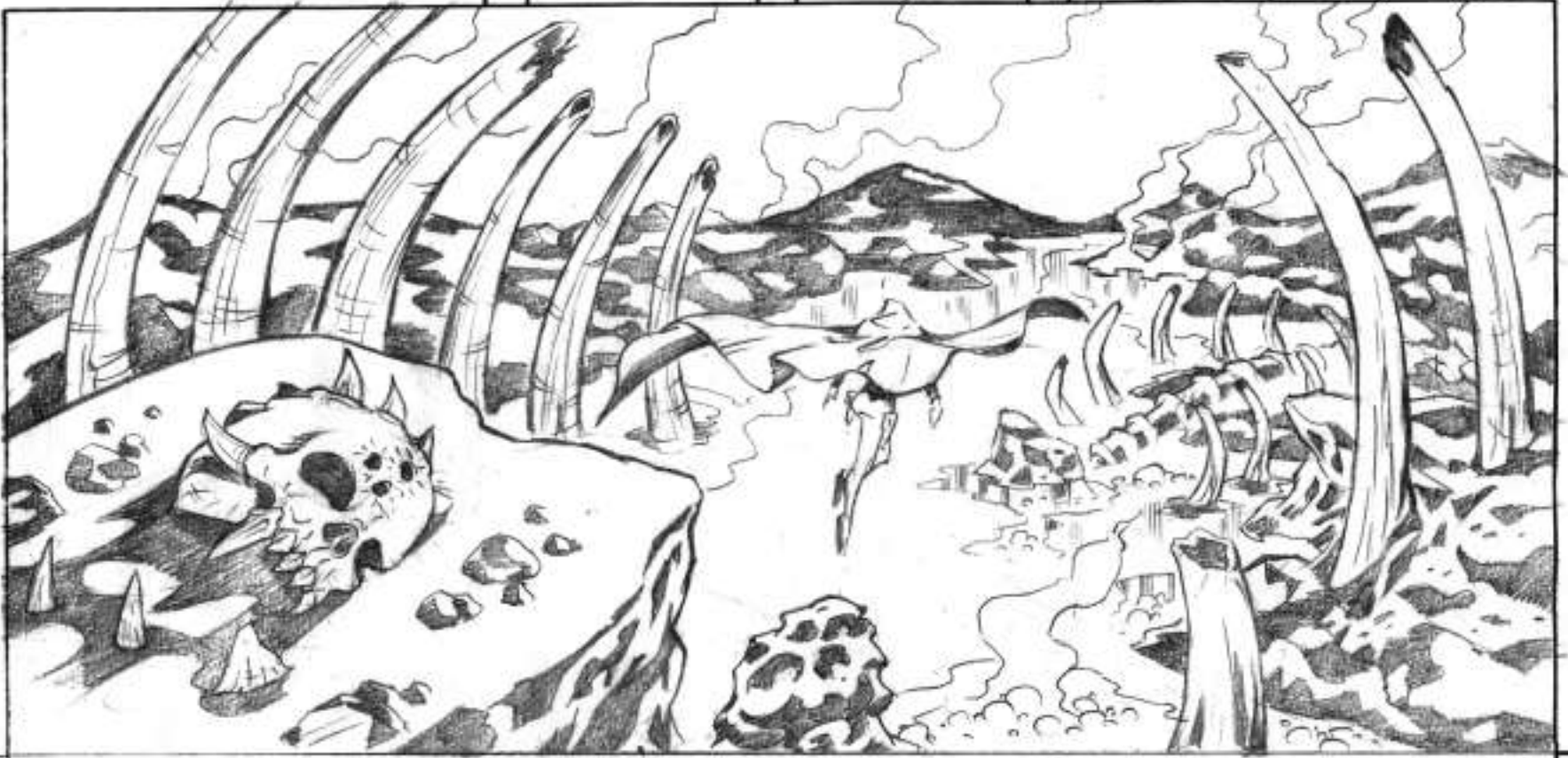
PENCILLER:

INKER:

COLORIST:

LETTERER:

WRITER:



INSTRUCTIONS: PAGES WITH FINISHED ART SHOULD MEASURE 10" WIDE BY 15" TALL. MAKE A TWO-PAGE SPREAD BY BUTTING PAPER AT EDGES. TAPE ON BACK. DO NOT OVERLAP AT CENTER! EACH HALF SHOULD MEASURE 10 5/8" WIDE, FULL SPREAD IS 21 1/4" WIDE.

PENCILLER:

INKER:

COLORIST:

LETTERER:

WRITER:





INSTRUCTIONS: PAGES WITH FINISHED ART SHOULD MEASURE 10" WIDE BY 15" TALL. MAKE A TWO-PAGE SPREAD BY BUTTING PAPER AT EDGES. TAPE ON BACK. DO NOT OVERLAP AT CENTER! EACH HALF SHOULD MEASURE 10 5/8" WIDE, FULL SPREAD IS 21 1/4" WIDE.

PENCILLER:

INKER:

COLORIST:

LETTERER:

WRITER:



INSTRUCTIONS: PAGES WITH FINISHED ART SHOULD MEASURE 10" WIDE BY 15" TALL. MAKE A TWO-PAGE SPREAD BY BUTTING PAPER AT EDGES. TAPE ON BACK. DO NOT OVERLAP AT CENTER! EACH HALF SHOULD MEASURE 10 5/8" WIDE, FULL SPREAD IS 21 1/4" WIDE.

PENCILLER:

INKER:

COLORIST:

LETTERER:

WRITER:



INSTRUCTIONS: PAGES WITH FINISHED ART SHOULD MEASURE 10" WIDE BY 15" TALL. MAKE A TWO-PAGE SPREAD BY BUTTING PAPER AT EDGES. TAPE ON BACK. DO NOT OVERLAP AT CENTER! EACH HALF SHOULD MEASURE 10 5/8" WIDE, FULL SPREAD IS 21 1/4" WIDE.

PENCILLER: _____ INKER: _____ COLORIST: _____ LETTERER: _____ WRITER: _____



INSTRUCTIONS: PAGES WITH FINISHED ART SHOULD MEASURE 10" WIDE BY 15" TALL. MAKE A TWO-PAGE SPREAD BY BUTTING PAPER AT EDGES. TAPE ON BACK. DO NOT OVERLAP AT CENTER! EACH HALF SHOULD MEASURE 10 5/8" WIDE, FULL SPREAD IS 21 1/4" WIDE.

PENCILLER:

INKER:

COLORIST:

LETTERER:

WRITER: